



(주)삼애교역
SAMAE CO., LTD.



Product Information

Product Information

SAMAE Co., Ltd.
receives good reviews from Korea and
the world as it provides only the best
and trustworthy products as a Korean
sole importer of HITACHI which is
considered as a byword for
cosmetology devices.

www.3ae.co.kr



(주)삼애교역
SAMAE CO., LTD.

No. 1410, A-dong Wulim Blue Nine, 583, Yangcheon-ro,
Gangseo-gu, Seoul, Korea

Customer Management Team : +82.2.2642-7303



SAMAE Co., Ltd. | Company Introduce

SAMAE Co., Ltd. started as a trading and retail company in 1991. The company imported razors, cosmetology devices, and daily necessities from **HITACHI**, Japan, and satisfied customers continuously through local distribution.

From May 1999, SAMAE Co., Ltd. imported technology and major components from HITACHI to manufacture locally and export to abroad. Moreover, company-owned brands such as **HIMAX**, **MIRACLE**, and **SAMAE** receive great reviews not only from Korea but also from the world as well.

SAMAE Co., Ltd. has attracted various customers by distributing only the best and trustworthy products as a sole importer of HITACHI, which is considered as a byword for cosmetology devices.

The company was founded as SAMAE in 1991, and it changed to SAMAE Co., Ltd. in 1998. Since then, it satisfied customer needs as a leading cosmetology devices company.

Moreover, in 1993, SAMAE Co., Ltd. concluded a contract with JOEWELL scissors of TOKOSHA, a world famous Japanese company, as an authorized agent in Korea. From then on, SAMAE Co., Ltd. did its utmost to provide high quality products to cosmetologists.

As the company name implies, SAMAE Co., Ltd. would like to be remembered to customers as gentle, understanding, thankful, and loving company.

The company will do its utmost to satisfy and impress customers, to take pride in the company, and to contribute establishing a brighter society.

SAMAE Co., Ltd. will try its best to satisfy and to impress customers by being honest and diligent.



Company History

1991. 06.

Founded Samae, CEO: Rak-yeong Seong
Company Address: No. 810, Jei-il Building, 44-35, Yeouido-dong, Yeongdeungpo-gu, Seoul, Korea
Business content: import, export, domestic sales distribution business

1992. 02.

Concluded Korean agency agreement with HITACHI, Japan

1992. 10.

Concluded Korean agency agreement with ADACHI, Japan

1993. 03.

Concluded Korean agency agreement with TOKOSHA, Japan

1998. 11.

Converted into SAMAE Co., Ltd. CEO: Lak-young Sung
Company: No. 907, No. 908, Jei-il Building, 44-35, Yeouido-dong, Yeongdeungpo-gu, Seoul, Korea
Business content: import, export, domestic sales distribution business, agency trade, etc.

1999. 04.

Joint development of electric hair clipper between HITACHI Japan, and SAMAE Co., Ltd

1999. 05.

Founded product line for electric hair clipper
Launch CL-7000K

2000. 01.

Commenced export to Japan, U.S.A, and Hong Kong

2000. 09.

Design registration of CL-7000K

2002. 08.

Extended and relocated to company building 315-1, Mok-dong, Yangcheon-gu, Seoul, Korea

2002. 09.

Resumed export and domestic sales of HITACHI razor

2003. 05.

Joint development of T-AZOR BLADE with ADACHI, Japan

2003. 06.

 Pine Logo+ HIMAX trademark registration

 Rose Logo+ HIMAX trademark registration

2005. 03.


Developed CL-303K, hair clipper for tiding up

2006. 02.

Design registration of CL-303K

2008. 07.


 Rose Logo trademark registration


 Pine Logo trademark registration

(株)三愛交易 trademark registration

2008. 10.

 HIMAX NEW&VISION trademark registration

 HIMAX HIMAX trademark registration

 SAMAE Mark trademark registration

2008. 11.

Extended and relocated to No. 1408~1411, A-dong, Wulim Blue Nine Business Center
No. 1410, A-dong Wulim Blue Nine, 583, Yangcheon-ro, Gangseo-gu, Seoul, Korea

2012. 10.

Renewal of official site of SAMAE Co., Ltd

www.3ae.co.kr



HITACHI
Inspire the Next

Electric Hair Clipper & Cosmetic Appliance

DUAL CUTTING SPEEDS 60 MIN USE PER FULL CHARGE

High and Low switches were installed to differentiate the rotating speed of blade for customers to use to cut large amount of hair quickly or to cut small amount of hair.



CL-7000K

- Trademark : HIMAX
- Recharge : 5 hours / two-way features for recharging and alternating current
- Power supply : 100~240V FREE VOLT/ SMPS charger
- Composition : clipper, charger, attachable comb (Large: 9~12mm), attachable comb (Small: 2~4mm), cleaning brush, oil (10ml)



CL-6000K

- Trademark : HIMAX
- Recharge : 5 hours / two-way features for recharging and alternating current
- Power supply : 100~240V FREE VOLT/ SMPS charger
- Composition : clipper, charger, attachable comb (Large: 9~12mm), attachable comb (Small : 2~4mm), cleaning brush, oil (10ml)



Electric Hair Clipper

- High-powered, able to use for 1 hour continuously
- Able to change attachable comb depending on the hair length



CL-8300KN

- Trademark : HITACHI
- Recharge : 5 hours / two-way features for recharging and alternating current
- Power supply : 100~240V FREE VOLT/ SMPS charger
- Composition : clipper, charger, attachable comb (Large: 9~12mm), attachable comb (Small: 3~6mm), cleaning brush, oil (10ml)

- High-powered, able to use for 1 hour continuously
- Able to change attachable comb depending on the hair length



CL-8800K

- Trademark : HITACHI
- Recharge : 5 hours / two-way features for recharging and alternating current
- Power supply : 100~240V FREE VOLT/ SMPS charger
- Composition : clipper, charger, attachable comb (Large: 9~12mm), attachable comb (Small: 3~6mm), cleaning brush, oil (10ml)

DUAL
CUTTING
SPEEDS

Blade was raised to 13 degree angle for easier hand movements



DUAL
CUTTING
SPEEDS

- Coated with rubber for easy and convenient grip
- Ergonomic design
- Lamp blinks when charging



CL-123

- Trademark : HIMAX
- Recharge : 4 hours / two-way features for recharging and alternating current
- Power supply : 100~240V FREE VOLT / SMPS charger
- Composition : clipper, charger, attachable comb (Large: 6mm), attachable comb (Small: 3mm), cleaning brush, oil (10ml)

26STEP
CUTTING

- Lighter in weight and stronger in power
- 26 steps (0.5~30mm) of attachable comb function



CL-365K

- Trademark : HIMAX
- Recharge: 1 hour / two-way features for recharging and alternating current
- Power supply: 100~240V FREE VOLT/ SMPS charger
- Composition: clipper, charger, attachable comb (Large: 18~30mm), attachable comb (Small: 3~15mm), cleaning brush, oil (10ml)

Electric Hair Clipper



Used for delicate wrap up

CL-303K

- Trademark: HIMAX
- Recharge: 5 hours / two-way features for recharging and alternating current
- Power supply: 100~240V FREE VOLT/ SMPS charger
- Composition: clipper, charger, cleaning brush, oil (10ml)

DUAL CUTTING SPEEDS



Guideline prevents hair spattering to hand when cutting hair

CL-3300K

- Trademark: HIMAX
- Recharge: 5 hours / two-way features for recharging and alternating current
- Power supply: 100~240V FREE VOLT/ SMPS charger
- Composition: clipper, charger, attachable comb (Large: 9~12mm), attachable comb (Small: 3~6mm), cleaning brush, oil (10ml)

Electric Pet Clipper



MORE LIGHT HIMAX



110 grams lighter and slimmer
-Able to use for 40 minutes
-Able to use even when electric cord is separated

CL-2300

- Trademark: HIMAX
- Recharge: 7 hours / two-way features for recharging and alternating current
- Power supply: 220V
- Composition: clipper, charger, attachable comb (Large: 9~12mm), attachable comb (Small: 3~6mm), cleaning brush, oil (10ml)

PET STAR HIMAX



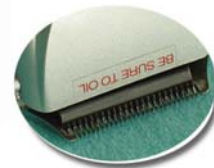
CL-603

- Trademark: HIMAX
- Recharge: 7 hours / two-way features for recharging and alternating current
- Power supply: 220V
- Composition: clipper, charger, attachable comb (Large: 9~12mm), attachable comb (Small: 3~6mm), cleaning brush, oil (10ml)

Includes 3 functional blades:



#40 for normal cut



#30 for special wrap ups



#10 for gap wrap ups

Cosmetic Appliance



BM-550

- Use for arranging eyebrows
- Includes 1 battery (AAA)



HR-530

- Curling iron for eyebrows
- Includes 1 battery (AAA)



BM-03

Able to cleanse with water for cleaner maintenance

- Use for arranging hair in nostrils
- Includes 1 battery (AA)

DBS-1

- Electric toothbrush
- Includes 2 batteries (AA)



T-RAZOR

- Two-in-one razor



T-BLADE

- Two-in-one razor blade



IB-N70

- Ion brush
- Includes 2 batteries (AAA)



BF-3000

- Whisk



Hand crafted using the highest quality materials that uphold tradition of 100 years

Haircutting Scissors



GOOD
DESIGN

JOEWELL

SCISSORS *Ranks top in Japanese market share*

JOEWELL delivers products that fit the customer needs with precise and equal quality by setting consistent system from planning and examining designs, manufacturing process to quality control.

SUPREME SCC-5700F / 6000F



SUPREME SCC

Latest model: Semi offset handle + cobalt convex blade Ergonomic design with the advantages of Symmetry and Offset allows users to use this with ease.

Two sizes featuring perfect balance of 5.7 inch and 6 inch are available. Through repetition of monitoring and tests, JOEWELL considers the operability of each set, and examines detailed part of shape and weight balance to deliver products that are easy to use and that have exclusive and simple designs.



Classification	Content	Classification	Content
Model	SCC-5700	Country of Origin	Japan
Size	5.7 inch	Manufacturer	JOEWELL
Screw	Dry Bearing	Total Length	161mm
Finger Ring Type	Removable Finger Rest	Blade Length	57mm
Blade Processing Method	Convex	Blade Material	Cobalt Base Alloy
Handle Type	Symmetric Offset	Handle Material	Titanium Coated Handle
Finger Hole Size	Regular	Weight	49.5g
Type of Scissors	Haircutting	HRC Hardness	



JOEWELL Scissors

SUPREME SCS-F5250PG / F5750PG



SUPREME SCS-5250F / 5750F



SUPREME SCS-5500S / 6000S



CONCAVE COBALT BR-525F / 575F



FX-PRO BT-50 / 55 / 60 SKULL



FX-PRO P50 / PT55 / PT60



NEW COBALT-4.5 / 5 / 5.5N / 6



NEW COBALT-5.5F / 6F



JOEWELL Scissors

COBALT-4500 / 5000 / 5500 / 6000



COBALT-5500F



CURVE GXR-58



CURVE SDB-58R / 60R



SDB-600F / 650F



CRAFT CR-610 / 630



KCX-550 / 600



TR-55C / 60C



JOEWELL Scissors

JS-550 / 600



JF-550 / 600



Z-55C / 60C



ZII-55CX / 60CX



Joewell 45 / 50 / 55 / 60 / 65 / 70



SZ-525 / 575



C-SERIES C525 / C550 / 600 WHITE , RED



C-SERIES C525 / C550 / 600 PINK , BLUE



JOEWELL Scissors

SUPREME SGT-17 / 22



SNT-40



JGC-24



HXG-14 / 17 / 20



JCT-40 / JCT-35 / 30



E-30 / 40 / EF-40



GXG-11 / 14 / 17 / 20



GXN-24



JOEWELL Scissors

SX-700 / 675



SCX-675 / 650



FCX2-675 / 660 / FCX-650



FZ-70



LEFT LF-55 / 60 / 65 / 70



LEFT LT-30F / 40F



LEFT LH-50 / 55 / 60



LEFT LG-20



JOEWELL Customized Scissors



Haircutting Scissors

MIRACLE
SCISSORS *MIRACLE shines more brightly in hair shops.*

Ergonomic design to provide comfort to customers is a basis for all scissors. Strict quality control of manufacturing factories and follow-up services firmly positioned products as products favored by professionals.

C55SF-PG



C60SF-YG



C55FF-TR



C60FF-BR



C63SF-SS



G20SF-SS



SCREW COVER



ING-35 / 40



ING-550/ 600



ING-675 / 700



MIRACLE Scissors

BG-28C



BR-14C



GBY-26C



GT-35C



GX-40C



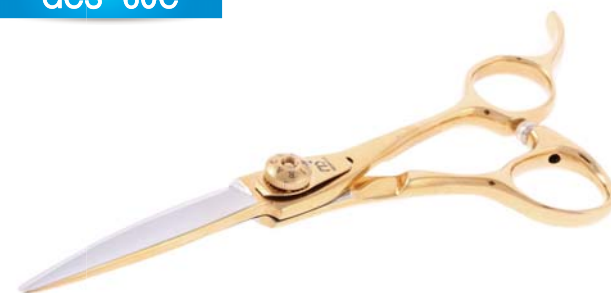
SX-35C



TEN-10C



GCS-60C



MIRACLE Scissors

GD-55C



GK-55C



GS-55C



SA-55C



SF-55C



SP-55C



VT-700



LEFT SZ-55C

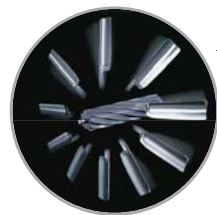




HITACHI
Inspire the Next

HITACHI, a largest electric goods manufacturing industry in Japan, is a multinational corporation. It has celebrated 100th anniversary, and is the symbol of Japanese manufacturing industry. According to total sales in 2009, HITACHI came third following Siemens from Germany and Samsung Electronics from Korea. Not only that, it is stable and fast growing corporation that ranked 371 from Forbes Global 2000 list in 2007. HITACHI has a technical tie-up with SAMAE Co., Ltd. and manufactures cosmetology electronic goods.

Electric Shaver



ROTARY GRANZ

S-BLADE *New product solely developed by HITACHI*

Rotary method rotating blade is specially manufactured using Hitachi's world first technology. This cuts beard by instantly pulling it causing clean shaving even till deep inside the skin.



RM-TX7980K

- Waterproof
- Head: 3 heads
- Blade: rotary method 2 blades
- Recharge: 1.5 hours (1 hour 30 minutes)
- Power supply: 100~240V FREE VOLT / SMPS recharger



RM-SX1100K

- Waterproof
- Head: 1 head
- Blade: rotary method 1 blade
- Recharge: 1 hour
- Power supply: 220V



RM-T3970K

- Waterproof
- Head: 3 heads
- Blade: to-and-fro method 2 blades
- Recharge: 1 hour
- Power supply: 220V



RM-W2400K

- Waterproof
- Head: 2 heads
- Blade: to-and-fro method 2 blades
- Recharge: 5 hours
- Power supply: 220V



RM-S1400K

- Waterproof
- Head: 1 head
- Blade: to-and-fro 1 blade
- Recharge: 5 hours
- Power supply: 220V



RM-2600K

- Head: 1 head
- Blade: to-and-fro 1 blade
- Recharge: 5 hours
- Power supply: 100~240V FREE VOLT / SMPS recharger



Electric Man Shaver

Hair Electrical Equipment

HIMAX NEW & VISION

Secadora & Rollo Completes abundant beauty with hair protection

Equipments are manufactured for business use, and are made with Korean technology from components to production in Korea. Equipments are not only sold within Korea but also are exported to abroad. Repurchase rate is 100%! You can be a professional, too.

Convenient and efficient product loved by professionals Completes natural hair styles



Temperature sensor

It is safe because temperature sensor is installed to automatically shut off the power when cover is closed.



Various sizes of bobbins and clips

Convenient use is possible due to various sizes of bobbins and clips included to create diverse hair styles.

RL-9300 (M x 8 / L x 16 / LL x 6)

- 110~220V FREE VOLT
- Temperature sensor attached
- 30 bobbins included
- Large bobbin of 30 mm in size adopted
- Number of pins: 30, number of clips: 15
- Switched off when cover is closed

Para cabellos Secadora & Rollo

Reliable professional hair products manufactured domestically .



Ultra light weight (560g)
causes no pressure on wrists
Anion wind to create healthier hair

DR-1788

- 220V 1400W
- Double hair inflow prevention filter adopted
- Convenient 4 step switch (Stop, Cold Wind, Low, High)
- Supple and simple design
- Cool switch adopted
- Fast setting effect with abundant heat
- Anion effect to protect hair



DR-1688

- 220V 1350W
- Double hair inflow prevention filter adopted
- Convenient 4 step switch (Stop, Cold Wind, Low, High)
- Supple and simple design
- Power supply lamp adopted
- Fast setting effect with abundant heat
- Anion effect to protect hair



DR-1588

- 220V 1350W
- Double hair inflow prevention filter adopted
- Convenient 4 step switch (Stop, Cold Wind, Low, High)
- Supple and simple design
- Convenient storage with folding grip
- Fast setting effect with abundant heat
- Anion effect to protect hair



RL-9150 (M x 4 / L x 8 / LL x 3)

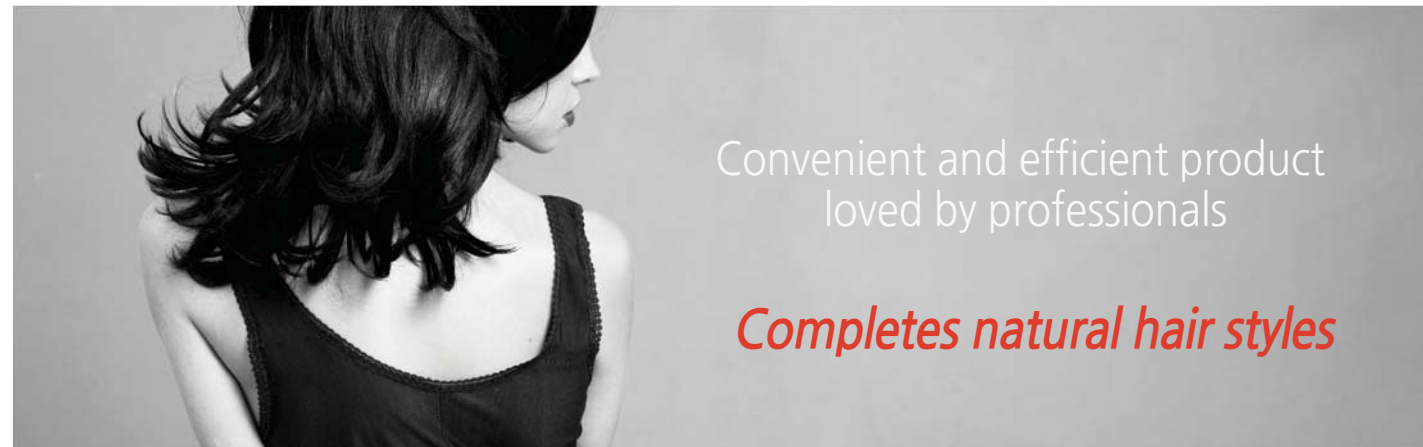
- 110~220V FREE VOLT
- Temperature sensor attached
- 15 bobbins included
- Large bobbin of 30 mm in size adopted
- Number of pins: 15, number of clips: 15
- Switched off when cover is closed



RL-9000 (M x 2 / L x 6 / LL x 2)

- 110~220V FREE VOLT
- Temperature sensor attached
- 10 bobbins included
- Large bobbin of 30 mm in size adopted
- Number of pins: 10, number of clips: 10
- Switched off when cover is closed

Hair Iron



IR-377

- Specially plated using brass
- Slip resistant safe grip
- ON/OFF switch, power supply lamp
- Temperature controller adopted
- 360 degree rotating circular cord
- Largest size in Korea (22Ø, 25Ø, 28Ø, 31Ø, 35Ø)
- Abundant heat to create various hair styles



IR-369

- Slip resistant safe grip
- ON/OFF switch, power supply lamp
- 360 degree rotating circular cord
- Largest size in Korea (22Ø, 25Ø, 28Ø, 31Ø, 35Ø)
- Abundant heat to create various hair styles
- Cord length: 2.2m



IR-330

- Simple detachable roll brush
- Convenient 2 types of brushes (tweezers brush, roll brush)
- 360 degree rotating circular cord
- Gas curling iron method electronic curling iron
- Abundant heat to create various hair styles



Magic Perm



MG-6500

- Heating board size: 28mm X 80mm
- Specially coated anodizing (permanent)
- ON/OFF switch and power supply lamp
- Temperature controller adopted
- 360 degree rotating circular cord
- Cord length: 2.5m
- Abundant heat to create various hair styles

MG-8000

- Heating board size: 28mm X 80mm
- Use ceramic coated heating board to protect hair
- Supple and sophisticated design
- ON/OFF switch and power supply lamp
- Temperature controller adopted
- 360 degree rotating circular cord
- Abundant heat to create various hair styles



MG-6300R

- Heating board size: 19mm X 86mm
- Use ceramic heater and heating board to protect hair
- Supple and sophisticated design
- ON/OFF switch and power supply lamp
- Temperature controller adopted
- 360 degree rotating circular cord
- Cord length: 2.5m



MG-7100

- Heating board size: 19mm X 86mm
- Use ceramic coated heating board to release anion
- Supple and simple design
- ON/OFF switch and power supply lamp
- Temperature difference is little when use for a long time
- 360 degree rotating circular cord



MG-520

- Heating board size: L 19mm X 80mm / M 38mm X 80mm
- Use corrosion resisting heating board
- ON/OFF switch and power supply lamp
- 360 degree rotating circular cord
- Abundant heat to create various hair styles

